

## TVP Retail Center For Lease Occupancy July 1<sup>st</sup>, 2018



**LOCATION:** Treasure Valley Pointe Subdivision  
16554 Midland Boulevard  
Nampa, ID

**PROPERTY:** Total Building Area: 7,120 SF  
40 Parking Stalls or 5.6/1,000 SF  
Monument Signage  
Building Sprinklered  
Patio Area  
Grease Trap

**LEASING:** 100: 3,516 SF - Leased  
101: 1,204 SF - \$26.00/SF NNN  
102: 1,200 SF - \$26.00/SF NNN  
103: 1,200 SF - \$26.00/SF NNN  
NNN estimated at \$5.75/SF  
TI Allowance at \$40.00/SF

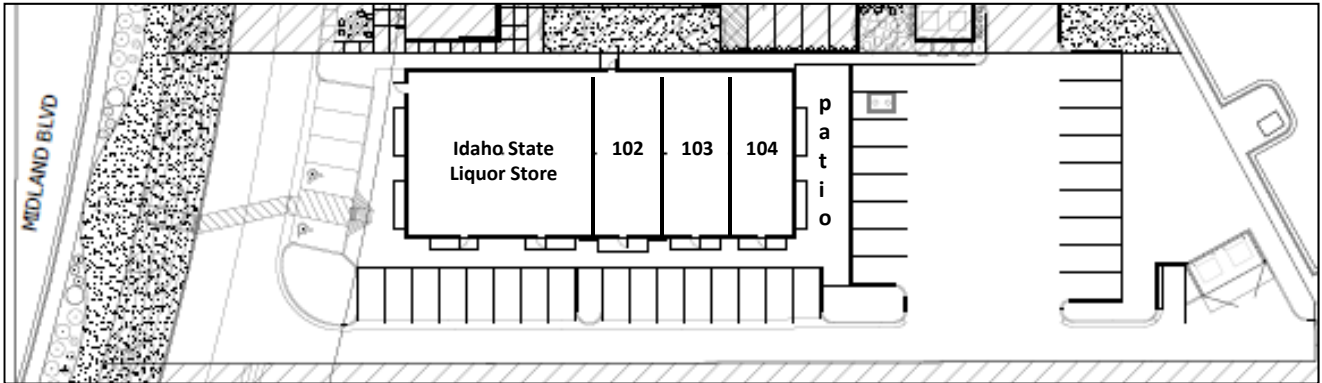


**Contact:** \_\_\_\_\_  
RFR Properties, LLC, PO Box 2579, Eagle, ID 83616  
[www.rfrproperties.com](http://www.rfrproperties.com)

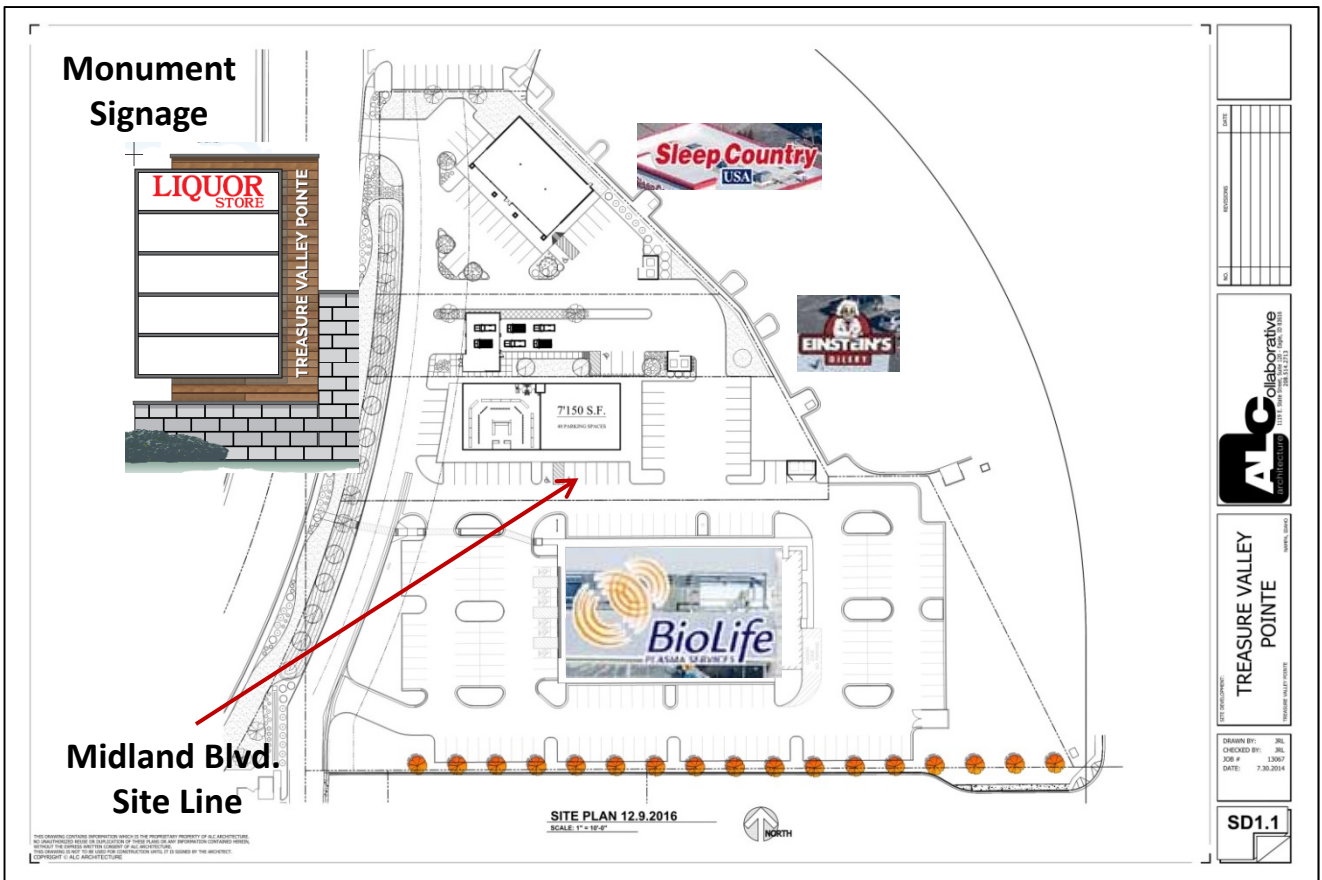
**Bob Runyan: 208.863.8209 or [br@rfrproperties.com](mailto:br@rfrproperties.com)**

The information contained herein has been obtained by reliable sources, but is not guaranteed. This offering is subject to errors, omissions, prior sale, price change, and withdrawal.

# Site Plan



# Treasure Valley Pointe Subdivision



THIS DRAWING CONTAINS INFORMATION WHICH IS THE SOLE PROPERTY OF ALC ARCHITECTURE. NO WARRANTIES ARE MADE OR ASSUMPTIONS OF LIABILITY OR RESPONSIBILITY FOR ANY INFORMATION CONTAINED HEREIN. REVISIONS TO THIS DRAWING ARE THE PROPERTY OF ALC ARCHITECTURE. COPYRIGHT © ALC ARCHITECTURE

NO.	DATE	REVISIONS

**ALC** Collaborative  
ARCHITECTURE

**TREASURE VALLEY POINTE**  
REPAIRING SPACES

DESIGN BY: JIL  
CHECKED BY: JIL  
JOB #: 1302  
DATE: 7.30.2014

**SD1.1**