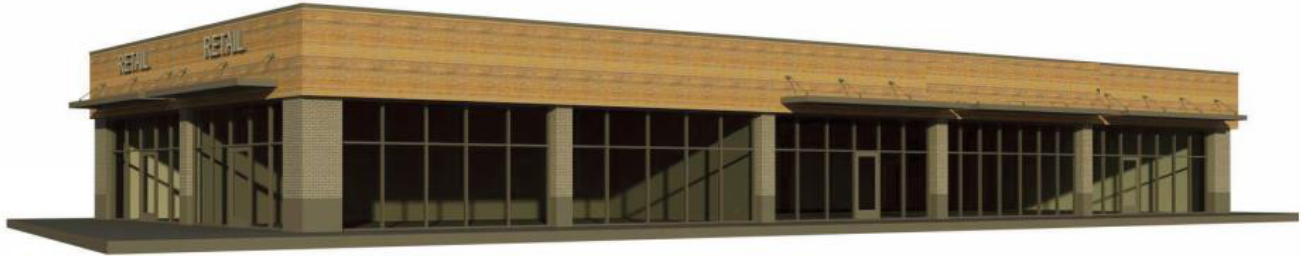


## TVP Retail Center For Lease



**LOCATION:** Treasure Valley Pointe Subdivision  
16554 Midland Boulevard  
Nampa, ID

**PROPERTY INFORMATION:**  
Total Building Area: 7,120 SF  
40 Parking Stalls or 5.6/1,000 SF

**LEASING INFORMATION:**  
Suites: 100: 3,516 SF - Leased  
101: 1,204 SF - \$26.00/SF NNN  
102: 1,200 SF - \$26.00/SF NNN  
103: 1,200 SF - \$26.00/SF NNN  
NNN estimated at \$5.50/SF  
TI Allowance at \$40.00/SF  
Monument Signage

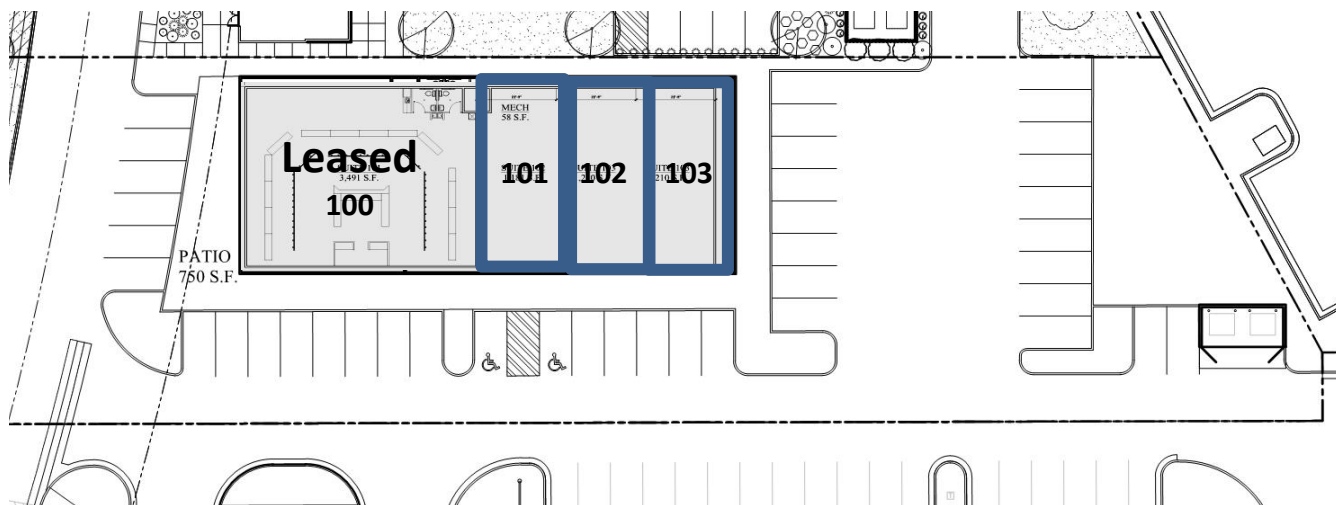


**Contact:** \_\_\_\_\_  
RFR Properties, LLC, PO Box 2579, Eagle, ID 83616  
[www.rfrproperties.com](http://www.rfrproperties.com)

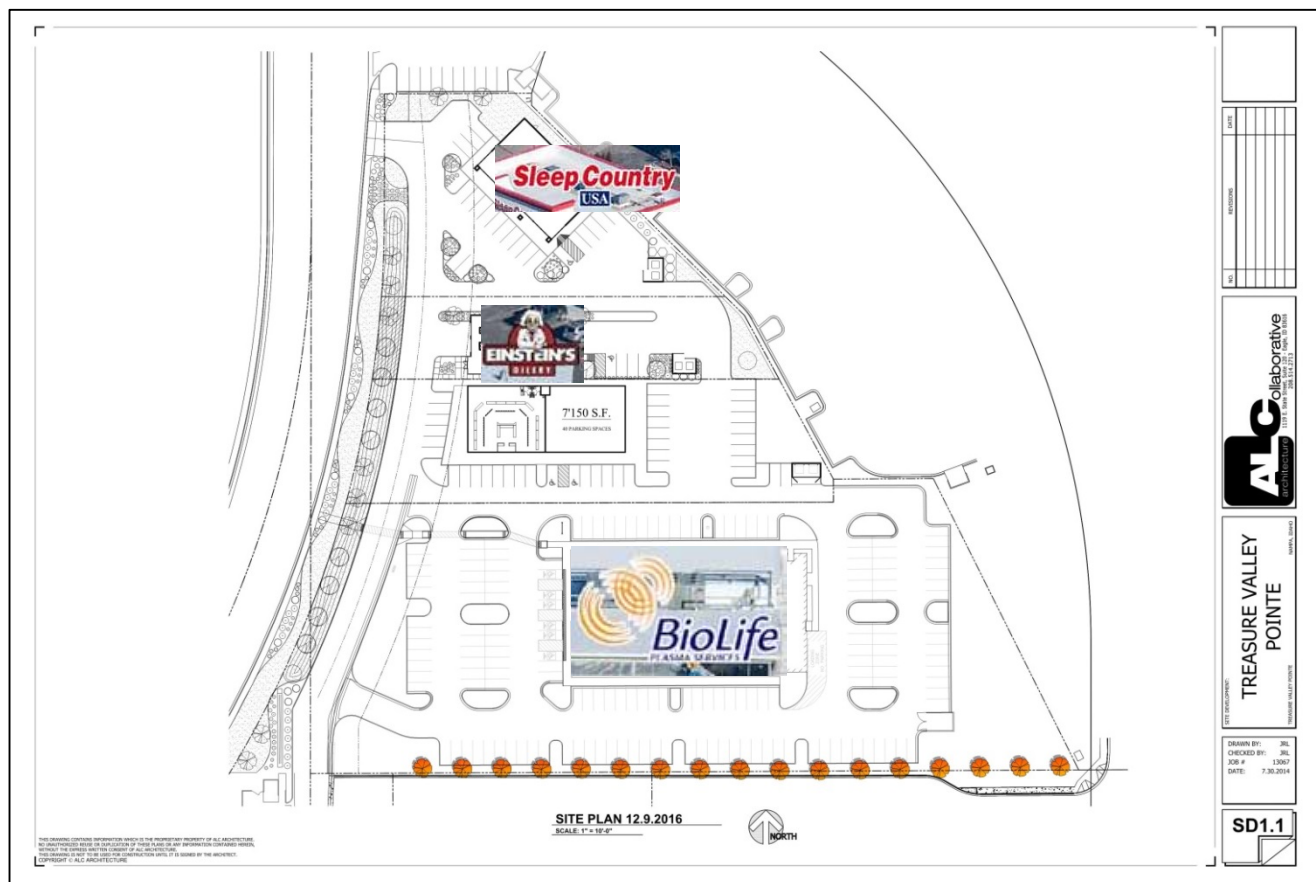
**Bob Runyan: 208.863.8209 or [br@rfrproperties.com](mailto:br@rfrproperties.com)**

The information contained herein has been obtained by reliable sources, but is not guaranteed. This offering is subject to errors, omissions, prior sale, price change, and withdrawal.

# Site Plan



# Treasure Valley Pointe Subdivision



THIS DRAWING CONTAINS INFORMATION WHICH IS THE PROPRIETARY PROPERTY OF ALC ARCHITECTURAL CONSULTANTS. ANY REPRODUCTION OR USE OF THIS DRAWING OR ANY PART THEREOF WITHOUT THE WRITTEN PERMISSION OF ALC ARCHITECTURAL CONSULTANTS IS STRICTLY PROHIBITED. THE USER OF THIS DRAWING SHALL BE SOLELY RESPONSIBLE FOR THE ACCURACY OF THE INFORMATION CONTAINED THEREIN. THE USER SHALL BE SOLELY RESPONSIBLE FOR THE ACCURACY OF THE INFORMATION CONTAINED THEREIN. THE USER SHALL BE SOLELY RESPONSIBLE FOR THE ACCURACY OF THE INFORMATION CONTAINED THEREIN.